

MONTHLY MEMBERSHIP PROGRESS REPORT

LOCATION AUSTRALIA

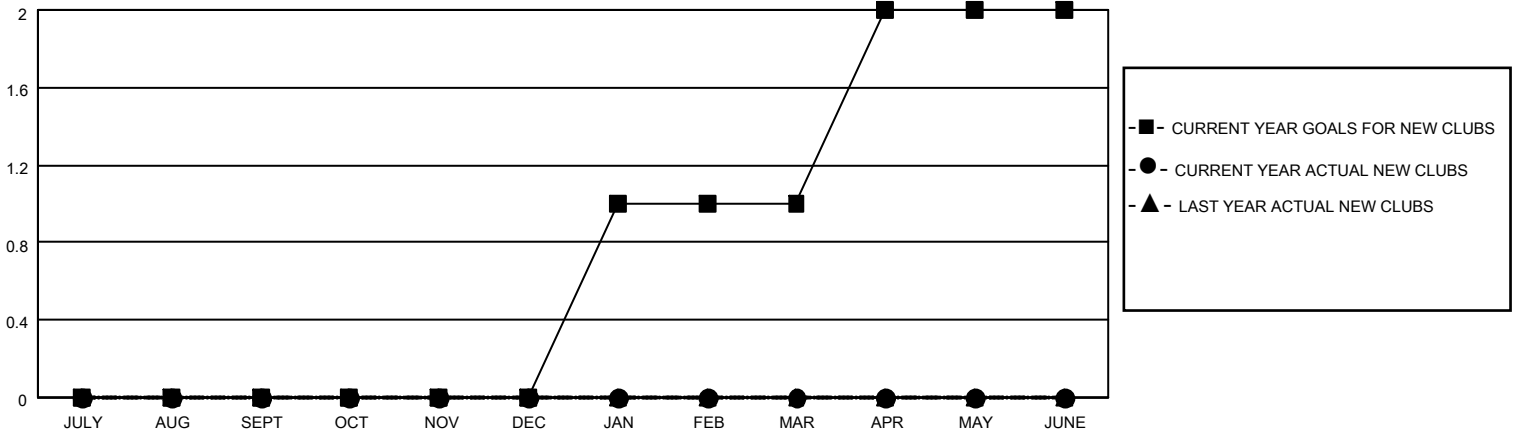
District 201Q1

Results as of: 4/30/2022

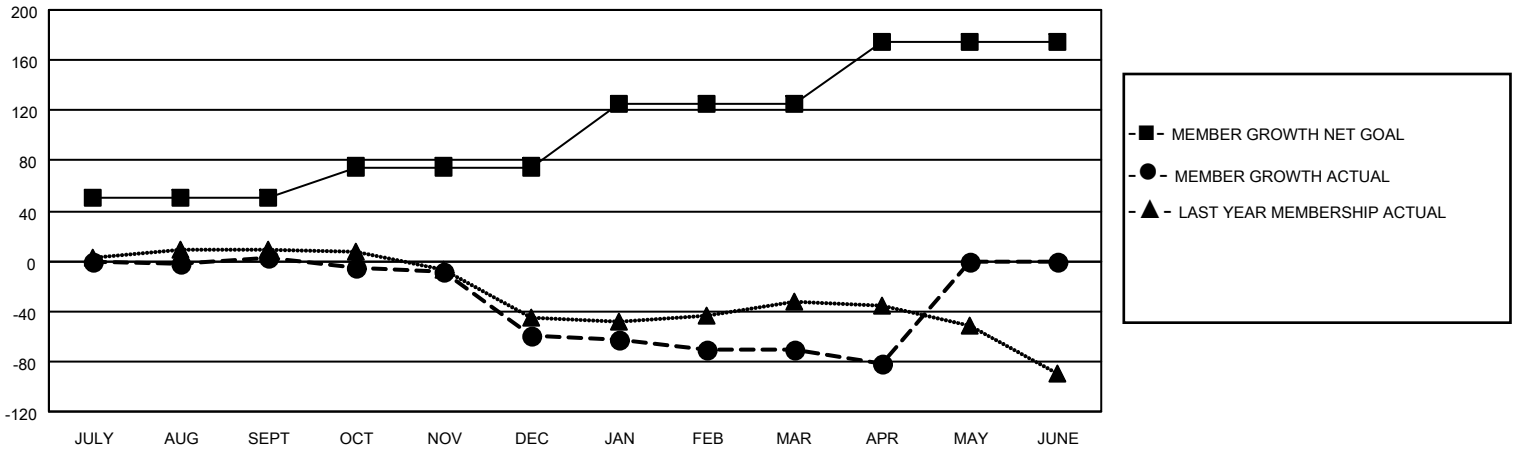
| Clubs | | | |
|-----------------------|---------------|-----------|---------------|
| RESULTS FOR 2021-2022 | | | |
| QUARTER | NEW CLUB GOAL | NEW CLUBS | DROPPED CLUBS |
| JULY/AUG/SEPT | 0 | 0 | 1 |
| OCT/NOV/DEC | 0 | 0 | 1 |
| JAN/FEB/MAR | 1 | 0 | 1 |
| APR/MAY/JUNE | 1 | 0 | 0 |

| Members | | | |
|-----------------------|------------------------|----------------------|---|
| RESULTS FOR 2021-2022 | | | |
| QUARTER | MEMBER GROWTH NET GOAL | MEMBER GROWTH ACTUAL | DROPPED MEMBERS ACTUAL (including transfers) |
| JULY/AUG/SEPT | 50 | 43 | 31 |
| OCT/NOV/DEC | 25 | 37 | 96 |
| JAN/FEB/MAR | 50 | 34 | 35 |
| APR/MAY/JUNE | 50 | 11 | 22 |

GOALS AND ACTUAL NEW CLUBS CUMULATIVE



GOALS AND ACTUAL MEMBERS CUMULATIVE



DROPPED CLUBS: 3

40 CLUBS OF 75 ADDED 1 OR MORE NEW MEMBERS

GENDER DISTRIBUTION

DROPPED MEMBERS

| | |
|----------------|------------|
| DECEASED | 21 |
| CLUB CANCELLED | 0 |
| OTHER | 163 |
| TOTAL | 184 |

[CLICK HERE FOR CUMULATIVE MEMBERSHIP DATA](#)

| | |
|----------------------|--------------|
| MALE | 869 (59.93%) |
| FEMALE | 581 (40.07%) |
| NON BINARY | 0 (0.00%) |
| PREFER NOT TO ANSWER | 0 (0.00%) |

TOTAL FAMILY UNIT MEMBERS 265

FAMILY MEMBERS PAYING HALF DUES 134